

This paper originally appeared in Vol. 61, No.6, pp. 762-775.

The authors noted an error in the first publication and have requested the republication of this paper.

General Interest

Hazard Analysis and Critical Control Point Principles and Application Guidelines[†]

ADOPTED AUGUST 14, 1997

NATIONAL ADVISORY COMMITTEE ON MICROBIOLOGICAL CRITERIA FOR FOODS

Executive Secretariat, USDA/FSIS, Suite 6913 Franklin Court, 1400 Independence Avenue S.W., Washington, D.C. 20250-3700, USA*

MS 97-231: Received 8 September 1997/Accepted 30 September 1997

TABLE OF CONTENTS

- I. Executive Summary
- II. Definitions
- III. HACCP Principles
- IV. Guidelines for Application of HACCP Principles
 - A. Introduction
 - B. Prerequisite programs
 - C. Education and training
 - D. Developing a HACCP plan
 - E. Implementation and maintenance of the HACCP plan
 - F. References
- V. Appendices
 - A. Examples of common prerequisite programs
 - B. Example of a flow diagram for the production of frozen cooked beef patties
 - C. Examples of questions to be considered when conducting a hazard analysis
 - D. Examples of how the stages of hazard analysis are used to identify and evaluate hazards
 - E. Example I of a CCP decision tree
 - F. Example II of a CCP decision tree
 - G. Examples of verification activities
 - H. Examples of HACCP records

ABSTRACT

The HACCP Subcommittee of the National Advisory Committee on Microbiological Criteria for Foods (NACMCF) has prepared a revision of the document "Hazard Analysis and Critical Control Point System" that was adopted by the Committee in 1992. The Committee retained the previous seven HACCP principles but made their wording more concise; revised and added definitions such as those for hazard, verification, and validation; included new sections on prerequisite programs, education and training, and implementation and maintenance of the HACCP plan; revised and provided a more detailed explanation of the application of HACCP principles, especially hazard analysis and verification; and added or revised Appendices such as new examples of prerequisite programs and an additional decision tree for identifying critical control points (CCPs).

EXECUTIVE SUMMARY

The National Advisory Committee on Microbiological Criteria for Foods (Committee) reconvened a Hazard Analysis and Critical Control Point (HACCP) Working Group in 1995. The primary goal was to review the Committee's November 1992 HACCP document (2), comparing it with

current HACCP guidance prepared by the Codex Committee on Food Hygiene. Based on its review, the Committee made the HACCP principles more concise; revised and added definitions; included sections on prerequisite programs, education and training, and implementation and maintenance of the HACCP plan; revised and provided a more detailed explanation of the application of HACCP principles; and provided an additional decision tree for identifying critical control points (CCPs).

The Committee again endorses HACCP as an effective and rational means of assuring food safety from harvest to consumption. Preventing problems from occurring is the paramount goal underlying any HACCP system. Seven basic

* Author for correspondence.

† Sponsored by U.S. Department of Agriculture, Food Safety and Inspection Service; U.S. Department of Health and Human Services, Food and Drug Administration; U.S. Department of Commerce, National Marine Fisheries Service; and the U.S. Department of Defense, Office of the Army, Surgeon General. This article may be reproduced without prior permission.

principles are employed in the development of HACCP plans that meet the stated goal. These principles include hazard analysis, CCP identification, establishing critical limits, monitoring procedures, corrective actions, verification procedures, and record-keeping and documentation. Under such systems, if a deviation occurs indicating that control has been lost, the deviation is detected and appropriate steps are taken to reestablish control in a timely manner to ensure that potentially hazardous products do not reach the consumer.

In the application of HACCP, the use of microbiological testing is seldom an effective means of monitoring CCPs because of the time required to obtain results. In most instances, monitoring of CCPs can best be accomplished through the use of physical and chemical tests and through visual observations. Microbiological criteria do, however, play a role in verifying that the overall HACCP system is working.

The Committee believes that the HACCP principles should be standardized to provide uniformity in training and applying the HACCP system by industry and government. In accordance with the National Academy of Sciences recommendation, the HACCP system must be developed by each food establishment and tailored to its individual product, processing, and distribution conditions.

In keeping with the Committee's charge to provide recommendations to its sponsoring agencies regarding microbiological food safety issues, this document focuses on this area. The Committee recognizes that to assure food safety, properly designed HACCP systems also must consider chemical and physical hazards in addition to other biological hazards.

For a successful HACCP program to be properly implemented, management must be committed to a HACCP approach. A commitment by management will indicate an awareness of the benefits and costs of HACCP and include education and training of employees. Benefits, in addition to enhanced assurance of food safety, are better use of resources and timely response to problems.

The Committee designed this document to guide the food industry and advise its sponsoring agencies in the implementation of HACCP systems.

DEFINITIONS

CCP Decision Tree: A sequence of questions to assist in determining whether a control point is a CCP.

Control: (a) To manage the conditions of an operation to maintain compliance with established criteria. (b) The state in which correct procedures are being followed and criteria are being met.

Control Measure: Any action or activity that can be used to prevent, eliminate, or reduce a significant hazard.

Control Point: Any step at which biological, chemical, or physical factors can be controlled.

Corrective Action: Procedures followed when a deviation occurs.

Criterion: A requirement on which a judgment or decision can be based.

Critical Control Point: A step at which control can be applied and is essential to prevent or eliminate a food safety hazard or to reduce it to an acceptable level.

Critical Limit: A maximum and/or minimum value to which a biological, chemical, or physical parameter must be controlled at a CCP to prevent, eliminate, or reduce to an acceptable level the occurrence of a food safety hazard.

Deviation: Failure to meet a critical limit.

HACCP: A systematic approach to the identification, evaluation, and control of food safety hazards.

HACCP Plan: The written document that is based on the principles of HACCP and that delineates the procedures to be followed.

HACCP System: The result of the implementation of the HACCP plan.

HACCP Team: The group of people who are responsible for developing, implementing, and maintaining the HACCP system.

Hazard: A biological, chemical, or physical agent that is reasonably likely to cause illness or injury in the absence of its control.

Hazard Analysis: The process of collecting and evaluating information on hazards associated with the food under consideration to decide which are significant and must be addressed in the HACCP plan.

Monitor: To conduct a planned sequence of observations or measurements to assess whether a CCP is under control and to produce an accurate record for future use in verification.

Prerequisite Programs: Procedures, including Good Manufacturing Practices, that address operational conditions providing the foundation for the HACCP system.

Severity: The seriousness of the effect(s) of a hazard.

Step: A point, procedure, operation, or stage in the food system from primary production to final consumption.

Validation: That element of verification focused on collecting and evaluating scientific and technical information to determine whether the HACCP plan, when properly implemented, will effectively control the hazards.

Verification: Those activities, other than monitoring, that determine the validity of the HACCP plan and that the system is operating according to the plan.

HACCP PRINCIPLES

HACCP is a systematic approach to the identification, evaluation, and control of food safety hazards based on the following seven principles:

- Principle 1: Conduct a hazard analysis.
- Principle 2: Determine the critical control points (CCPs).
- Principle 3: Establish critical limits.
- Principle 4: Establish monitoring procedures.
- Principle 5: Establish corrective actions.
- Principle 6: Establish verification procedures.

Principle 7: Establish record-keeping and documentation procedures.

GUIDELINES FOR APPLICATION OF HACCP PRINCIPLES

Introduction. HACCP is a management system in which food safety is addressed through the analysis and control of biological, chemical, and physical hazards from raw material production, procurement and handling, to manufacturing, distribution, and consumption of the finished product. For successful implementation of a HACCP plan, management must be strongly committed to the HACCP concept. A firm commitment to HACCP by top management provides company employees with a sense of the importance of producing safe food.

HACCP is designed for use in all segments of the food industry, from growing, harvesting, processing, manufacturing, distributing, and merchandising to preparing food for consumption. Prerequisite programs such as current Good Manufacturing Practices (cGMPs) are an essential foundation for the development and implementation of successful HACCP plans. Food safety systems based on the HACCP principles have been successfully applied in food processing plants, retail food stores, and food service operations. The seven principles of HACCP have been universally accepted by government agencies, trade associations, and the food industry around the world.

The following guidelines will facilitate the development and implementation of effective HACCP plans. Although the specific application of HACCP to manufacturing facilities is emphasized here, these guidelines should be applied as appropriate to each segment of the food industry under consideration.

Prerequisite programs. The production of safe food products requires that the HACCP system be built on a solid foundation of prerequisite programs. Examples of common prerequisite programs are listed in Appendix A. Each segment of the food industry must provide the conditions necessary to protect food while it is under their control. This has traditionally been accomplished through the application of cGMPs. These conditions and practices are now considered to be prerequisite to the development and implementation of effective HACCP plans. Prerequisite programs provide the basic environmental and operating conditions that are necessary for the production of safe, wholesome food. Many of the conditions and practices are specified in federal, state, and local regulations and guidelines (e.g., cGMPs and Food Code). The Codex Alimentarius General Principles of Food Hygiene describe the basic conditions and practices expected for foods intended for international trade. In addition to the requirements specified in regulations, industry often adopts policies and procedures that are specific to their operations. Many of these are proprietary. While prerequisite programs may impact on the safety of a food, they also are concerned with ensuring that foods are wholesome and suitable for consumption (Appendix A). HACCP plans are narrower in scope, being limited to ensuring that food is safe to consume.

The existence and effectiveness of prerequisite programs should be assessed during the design and implementation of each HACCP plan. All prerequisite programs should be documented and regularly audited. Prerequisite programs are established and managed separately from the HACCP plan. Certain aspects, however, of a prerequisite program may be incorporated into a HACCP plan. For example, many establishments have preventive maintenance procedures for processing equipment to avoid unexpected equipment failure and loss of production. During the development of a HACCP plan, the HACCP team may decide that the routine maintenance and calibration of an oven should be included in the plan as an activity of verification. This would further ensure that all of the food in the oven is cooked to the minimum internal temperature that is necessary for food safety.

Education and training. The success of a HACCP system depends on educating and training management and employees in the importance of their role in producing safe foods. This should also include information on the control of food-borne hazards related to all stages of the food chain. It is important to recognize that employees must first understand what HACCP is and then learn the skills necessary to make it function properly. Specific training activities should include working instructions and procedures that outline the tasks of employees monitoring each CCP.

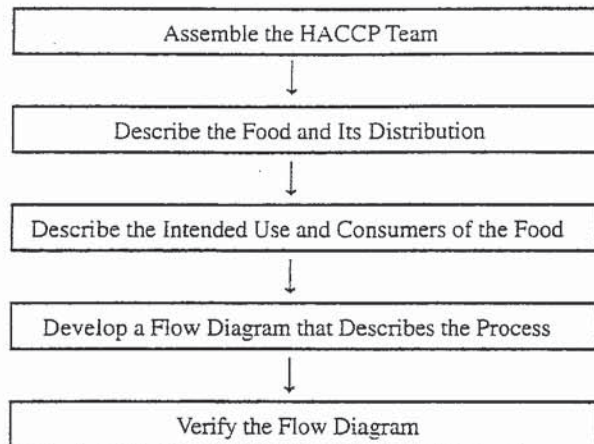
Management must provide adequate time for thorough education and training. Personnel must be given the materials and equipment necessary to perform these tasks. Effective training is an important prerequisite to successful implementation of a HACCP plan.

Developing a HACCP plan. The format of HACCP plans will vary. In many cases the plans will be product and process specific. However, some plans may use a unit operations approach. Generic HACCP plans can serve as useful guides in the development of process and product HACCP plans; however, it is essential that the unique conditions within each facility be considered during the development of all components of the HACCP plan.

In the development of a HACCP plan, five preliminary tasks need to be accomplished before the application of the HACCP principles to a specific product and process. The five preliminary tasks are given in Figure 1.

Assemble the HACCP team. The first task in developing an HACCP plan is to assemble a HACCP team consisting of individuals who have specific knowledge and expertise appropriate to the product and process. It is the team's responsibility to develop the HACCP plan. The team should be multidisciplinary and include individuals from areas such as engineering, production, sanitation, quality assurance, and food microbiology. The team should also include local personnel who are involved in the operation, because they are more familiar with the variability and limitations of the operation. In addition, this fosters a sense of ownership among those who must implement the plan. The HACCP team may need assistance from outside experts who are knowledgeable in the potential biological, chemical, and/or physical hazards associated with the product and

FIGURE 1. Preliminary tasks in the development of the HACCP plan.



the process. However, a plan that is developed totally by outside sources may be erroneous, incomplete, and lacking in support at the local level.

Because of the technical nature of the information required for hazard analysis, it is recommended that experts who are knowledgeable in the food process should either participate in or verify the completeness of the hazard analysis and the HACCP plan. Such individuals should have the knowledge and experience to correctly (a) conduct a hazard analysis; (b) identify potential hazards, (c) identify hazards that must be controlled; (d) recommend controls, critical limits, and procedures for monitoring and verification; (e) recommend appropriate corrective actions when a deviation occurs; (f) recommend research related to the HACCP plan if important information is not known; and (g) validate the HACCP plan.

Describe the food and its distribution. The HACCP team first describes the food. This consists of a general description of the food, ingredients, and processing methods. The method of distribution should be described, along with information on whether the food is to be distributed frozen, refrigerated, or at ambient temperature.

Describe the intended use and consumers of the food.

Describe the normal expected use of the food. The intended consumers may be the general public or a particular segment of the population (e.g., infants, immunocompromised individuals, the elderly, etc.).

Develop a flow diagram that describes the process.

The purpose of a flow diagram is to provide a clear, simple outline of the steps involved in the process. The scope of the flow diagram must cover all of the steps in the process that are directly under the control of the establishment. In addition, the flow diagram can include steps in the food chain that are before and after the processing that occurs in the establishment. The flow diagram need not be as complex as engineering drawings. A block-type flow diagram is sufficiently descriptive (see Appendix B). Also, a simple schematic of the facility is often useful in understanding and evaluating product and process flow.

Verify the flow diagram. The HACCP team should perform an on-site review of the operation to verify the accuracy and completeness of the flow diagram. Modifications should be made to the flow diagram as necessary and documented.

After these five preliminary tasks have been completed, the seven principles of HACCP are applied.

Conduct a hazard analysis (Principle 1). After addressing the preliminary tasks discussed above, the HACCP team conducts a hazard analysis and identifies appropriate control measures. The purpose of the hazard analysis is to develop a list of hazards that are of such significance that they are reasonably likely to cause injury or illness if not effectively controlled. Hazards that are not reasonably likely to occur would not require further consideration within an HACCP plan. It is important to consider in the hazard analysis the ingredients and raw materials, each step in the process, product storage and distribution, and final preparation and use by the consumer. When conducting a hazard analysis, safety concerns must be differentiated from quality concerns. A hazard is defined as a biological, chemical, or physical agent that is reasonably likely to cause illness or injury in the absence of its control. Thus, the word *hazard* as used in this document is limited to safety.

A thorough hazard analysis is the key to preparing an effective HACCP plan. If the hazard analysis is not done correctly and the hazards warranting control within the HACCP system are not identified, the plan will not be effective regardless of how well it is followed.

The hazard analysis and identification of associated control measures accomplish three objectives: Hazards that are to be controlled in the HACCP plan and associated control measures are identified. The analysis may identify needed modifications to a process or product so that product safety is further assured or improved. The analysis provides a basis for determining CCPs in Principle 2.

The process of conducting a hazard analysis involves two stages. The first, hazard identification, can be regarded as a brainstorming session. During this stage, the HACCP team reviews the ingredients used in the product, the activities conducted at each step in the process and the equipment used, the final product and its method of storage and distribution, and the intended use and consumers of the product. Based on this review, the team develops a list of potential biological, chemical, or physical hazards that may be introduced, increased, or controlled at each step in the production process. Appendix C lists examples of questions that may be helpful to consider when identifying potential hazards. Hazard identification focuses on developing a list of potential hazards associated with each process step under direct control of the food operation. A knowledge of any adverse health-related events historically associated with the product will be of value in this exercise.

After the list of potential hazards is assembled, stage two, the hazard evaluation, is conducted. In stage two of the hazard analysis, the HACCP team decides which potential hazards must be addressed in the HACCP plan. During this stage, each potential hazard is evaluated based on the

severity of the potential hazard and its likely occurrence. Severity is the seriousness of the consequences of exposure to the hazard. Considerations of severity (e.g., impact of sequelae, and magnitude and duration of illness or injury) can be helpful in understanding the public health impact of the hazard. Consideration of the likely occurrence is usually based on a combination of experience, epidemiological data, and information in the technical literature. When conducting the hazard evaluation, it is helpful to consider the likelihood of exposure and severity of the potential consequences if the hazard is not properly controlled. In addition, consideration should be given to the effects of short-term as well as long-term exposure to the potential hazard. Such considerations do not include common dietary choices which lie outside of HACCP. During the evaluation of each potential hazard, the food, its method of preparation, transportation, storage, and persons likely to consume the product should be considered to determine how each of these factors may influence the likely occurrence and severity of the hazard being controlled. The team must consider the influence of likely procedures for food preparation and storage and whether the intended consumers are susceptible to a potential hazard. However, there may be differences of opinion, even among experts, as to the likely occurrence and severity of a hazard. The HACCP team may have to rely on the opinion of experts who assist in the development of the HACCP plan.

Hazards identified in one operation or facility may not be significant in another operation producing the same or a similar product. For example, because of differences in equipment or maintenance programs, the probability of metal contamination may be significant in one facility but not in another. A summary of the HACCP team deliberations and the rationale developed during the hazard analysis should be kept for future reference. This information will be useful during future reviews and updates of the hazard analysis and the HACCP plan.

Appendix D gives three examples of using a logic sequence in conducting a hazard analysis. Although these examples relate to biological hazards, chemical and physical hazards are equally important to consider. Appendix D is for illustration purposes to further explain the stages of hazard analysis for identifying hazards. Hazard identification and evaluation as outlined in Appendix D may eventually be assisted by biological risk assessments as they become available. Although the process and output of a risk assessment is significantly different from a hazard analysis (4), the identification of hazards of concern and the hazard evaluation may be facilitated by information from risk assessments. Thus, as risk assessments addressing specific hazards

or control factors become available, the HACCP team should take these into consideration.

On completion of the hazard analysis, the hazards associated with each step in the production of the food should be listed along with any measure(s) that are used to control the hazard(s). The term control measure is used because not all hazards can be prevented, but virtually all can be controlled. More than one control measure may be required for a specific hazard. On the other hand, more than one hazard may be addressed by a specific control measure (e.g., pasteurization of milk).

For example, if an HACCP team were to conduct a hazard analysis for the production of frozen cooked beef patties (Appendices B and D), enteric pathogens (e.g., *Salmonella* and verotoxin-producing *Escherichia coli*) in the raw meat would be identified as hazards. Cooking is a control measure that can be used to eliminate these hazards. Table 1 is an excerpt from a hazard analysis summary table for this product.

The hazard analysis summary could be presented in several different ways. One format is a table such as Table 1. Another could be a narrative summary of the HACCP team's hazard analysis considerations and a summary table listing only the hazards and associated control measures.

Determine the critical control points (CCPs) (Principle 2). A critical control point is defined as a step at which control can be applied and is essential to prevent or eliminate a food safety hazard or to reduce it to an acceptable level. The potential hazards that are reasonably likely to cause illness or injury in the absence of their control must be addressed in determining CCPs.

Complete and accurate identification of CCPs is fundamental to controlling food safety hazards. The information developed during the hazard analysis is essential for the HACCP team in identifying which steps in the process are CCPs. One strategy to facilitate the identification of each CCP is the use of a CCP decision tree (Examples of decision trees are given in Appendices E and F). Although application of the CCP decision tree can be useful in determining whether a particular step is a CCP for a previously identified hazard, it is merely a tool and not a mandatory element of HACCP. A CCP decision tree is not a substitute for expert knowledge.

Critical control points are located at any step where hazards can be either prevented, eliminated, or reduced to acceptable levels. Examples of CCPs may include thermal processing, chilling, testing ingredients for chemical residues, product formulation control, and testing product for metal contaminants. CCPs must be carefully developed and

TABLE 1. Excerpt from a hazard analysis summary table

Step	Potential hazard (s)	Justification	Hazard to be address in plan? Y/N	Control measure(s)
5. Cooking	Enteric pathogens: e.g., <i>Salmonella</i> , verotoxigenic <i>E. coli</i>	Enteric pathogens have been associated with outbreaks of food-borne illness from undercooked ground beef	Y	Cooking

documented. In addition, they must be used only for purposes of product safety. For example, a specified heat process, at a given time and temperature designed to destroy a specific microbiological pathogen, could be a CCP. Likewise, refrigeration of a precooked food to prevent hazardous microorganisms from multiplying, or the adjustment of a food to a pH necessary to prevent toxin formation could also be CCPs. Different facilities preparing similar food items can differ in the hazards identified and the steps that are CCPs. This can be because of differences in each facility's layout, equipment, selection of ingredients, processes employed, etc.

Establish critical limits (Principle 3). A critical limit is a maximum and/or minimum value to which a biological, chemical, or physical parameter must be controlled at a CCP to prevent, eliminate, or reduce to an acceptable level the occurrence of a food safety hazard. A critical limit is used to distinguish between safe and unsafe operating conditions at a CCP. Critical limits should not be confused with operational limits, which are established for reasons other than food safety.

Each CCP will have one or more control measures to assure that the identified hazards are prevented, eliminated, or reduced to acceptable levels. Each control measure has one or more associated critical limits. Critical limits may be based on factors such as temperature, time, physical dimensions, humidity, moisture level, water activity (a_w), pH, titratable acidity, salt concentration, available chlorine, viscosity, preservatives, or sensory information such as aroma and visual appearance. Critical limits must be scientifically based. For each CCP, there is at least one criterion for food safety that is to be met. An example of a criterion is a specific lethality of a cooking process such as a 5D reduction in *Salmonella*. The critical limits and criteria for food safety may be derived from sources such as regulatory standards and guidelines, literature surveys, experimental results, and experts.

An example is the cooking of beef patties (Appendix B). The process should be designed to ensure the production of a safe product. The hazard analysis for cooked meat patties identified enteric pathogens (e.g., verotoxigenic *E. coli* such as *E. coli* O157:H7, and salmonellae) as significant biological hazards. Furthermore, cooking is the step in the process at which control can be applied to reduce the enteric pathogens to an acceptable level. To ensure that an acceptable level is consistently achieved, accurate information is needed on the probable number of the pathogens in the raw patties, their heat resistance, the factors that influence the heating of the patties, and the area of the patty that heats the slowest. Collectively, this information forms the scientific basis for the critical limits that are established. Some of the factors that may affect the thermal destruction of enteric pathogens are listed in Table 2. In this example, the HACCP team concluded that a thermal process equivalent to 155°F for 16 seconds would be necessary to assure the safety of this product. To ensure that this time and temperature are attained, the HACCP team for one facility determined that it would be necessary to establish critical limits for the oven

TABLE 2. Excerpt from a HACCP plan

Process step	CCP	Critical limits
5. Cooking	YES	Oven temperature: ___ °F Time, rate of heating and cooling (belt speed in ft/min): ___ ft/min Patty thickness: ___ in. Patty composition: e.g., all beef Oven humidity: ___ % RH

temperature and humidity, belt speed (time in oven), patty thickness and composition (e.g., all beef, beef and other ingredients). Control of these factors enables the facility to produce a wide variety of cooked patties, all of which will be processed to a minimum internal temperature of 155°F for 16 seconds. In another facility, the HACCP team may conclude that the best approach is to use the internal patty temperature of 155°F and hold for 16 seconds as critical limits. In this second facility, the internal temperature and hold time of the patties are monitored at a frequency to ensure that the critical limits are constantly met as they exit the oven. The example given in Table 2 applies to the first facility.

Establish monitoring procedures (Principle 4). Monitoring is a planned sequence of observations or measurements to assess whether a CCP is under control and to produce an accurate record for future use in verification. Monitoring serves three main purposes: First, monitoring is essential to food safety management in that it facilitates tracking of the operation. If monitoring indicates that there is a trend toward loss of control, then action can be taken to bring the process back into control before a deviation from a critical limit occurs. Second, monitoring is used to determine when there is loss of control and a deviation occurs at a CCP, i.e., exceeding or not meeting a critical limit. When a deviation occurs, an appropriate corrective action must be taken. Third, it provides written documentation for use in verification.

An unsafe food may result if a process is not properly controlled and a deviation occurs. Because of the potentially serious consequences of a critical limit deviation, monitoring procedures must be effective. Ideally, monitoring should be continuous, which is possible with many types of physical and chemical methods. For example, the temperature and time for the scheduled thermal process of low-acid canned foods is recorded continuously on temperature recording charts. If the temperature falls below the scheduled temperature or the time is insufficient, as recorded on the chart, the product from the report is retained and the disposition determined as in Principle 5. Likewise, pH measurement may be performed continually in fluids or by testing each batch before processing. There are many ways to monitor critical limits on a continuous or batch basis and record the data on charts. Continuous monitoring is always preferred when feasible. Monitoring equipment must be carefully calibrated for accuracy.

Assignment of the responsibility for monitoring is an important consideration for each CCP. Specific assignments will depend on the number of CCPs and control measures

and the complexity of monitoring. Personnel who monitor CCPs are often associated with production (e.g., line supervisors, selected line workers, and maintenance personnel) and, as required, quality control personnel. Those individuals must be trained in the monitoring technique for which they are responsible, fully understand the purpose and importance of monitoring, be unbiased in monitoring and reporting, and accurately report the results of monitoring. In addition, employees should be trained in procedures to follow when there is a trend toward loss of control so that adjustments can be made in a timely manner to ensure that the process remains under control. The person responsible for monitoring must also immediately report a process or product that does not meet critical limits.

All records and documents associated with CCP monitoring should be dated and signed or initialed by the person doing the monitoring.

When it is not possible to monitor a CCP on a continuous basis, it is necessary to establish a monitoring frequency and procedure that will be reliable enough to indicate that the CCP is under control. Statistically designed data collection or sampling systems lend themselves to this purpose.

Most monitoring procedures need to be rapid because they relate to on-line, "real-time" processes and there will not be time for lengthy analytical testing. Examples of monitoring activities include visual observations and measurement of temperature, time, pH, and moisture level.

Microbiological tests are seldom effective for monitoring because of their time-consuming nature and problems with assuring detection of contaminants. Physical and chemical measurements are often preferred because they are rapid and usually more effective for assuring control of microbiological hazards. For example, the safety of pasteurized milk is based on measurements of time and temperature of heating rather than testing the heated milk to assure the absence of surviving pathogens.

With certain foods, processes, ingredients, or imports, there may be no alternative to microbiological testing. However, it is important to recognize that a sampling protocol that is adequate to reliably detect low levels of pathogens is seldom possible because of the large number of samples needed. This sampling limitation could result in a false sense of security by those who use an inadequate sampling protocol. In addition, there are technical limitations in many laboratory procedures for detecting and quantitating pathogens and/or their toxins.

Establish corrective actions (Principle 5). The HACCP system for food safety management is designed to identify health hazards and to establish strategies to prevent, eliminate, or reduce their occurrence. However, ideal circumstances do not always prevail, and deviations from established processes may occur. An important purpose of corrective actions is to prevent foods that may be hazardous from reaching consumers. Where there is a deviation from established critical limits, corrective actions are necessary. Therefore, corrective actions should include the following

elements: (a) determine and correct the cause of noncompliance; (b) determine the disposition of noncompliant product; and (c) record the corrective actions that have been taken. Specific corrective actions should be developed in advance for each CCP and included in the HACCP plan. As a minimum, the HACCP plan should specify what is done when a deviation occurs, who is responsible for implementing the corrective actions, and that a record of the actions taken will be developed and maintained. Individuals who have a thorough understanding of the process, product, and HACCP plan should be assigned the responsibility for oversight of corrective actions. As appropriate, experts may be consulted to review the information available and to assist in determining disposition of noncompliant product.

Establish verification procedures (Principle 6). Verification is defined as those activities, other than monitoring, that determine the validity of the HACCP plan and that the system is operating according to the plan. The National Academy of Sciences (1) pointed out that the major infusion of science in a HACCP system centers on proper identification of the hazards, critical control points, critical limits, and instituting proper verification procedures. These processes should take place during the development and implementation of the HACCP plan and maintenance of the HACCP system. An example of a verification schedule is given in Table 3.

One aspect of verification is evaluating whether the facility's HACCP system is functioning according to the HACCP plan. An effective HACCP system requires little end-product testing, because sufficient validated safeguards are built in early in the process. Therefore, rather than relying on end-product testing, firms should rely on frequent reviews of their HACCP plan, verification that the HACCP plan is being correctly followed, and review of CCP monitoring and corrective action records.

Another important aspect of verification is the initial validation of the HACCP plan to determine that the plan is scientifically and technically sound, that all hazards have been identified, and that if the HACCP plan is properly implemented these hazards will be effectively controlled. Information needed to validate the HACCP plan often include (1) expert advice and scientific studies and (2) in-plant observations, measurements, and evaluations. For example, validation of the cooking process for beef patties should include the scientific justification of the heating times and temperatures needed to obtain an appropriate destruction of pathogenic microorganisms (i.e., enteric pathogens) and studies to confirm that the conditions of cooking will deliver the required time and temperature to each beef patty.

Subsequent validations are performed and documented by a HACCP team or an independent expert as needed. For example, validations are conducted when there is an unexplained system failure; a significant product, process, or packaging change occurs; or new hazards are recognized.

In addition, a periodic comprehensive verification of the HACCP system should be conducted by an unbiased, independent authority. Such authorities can be internal or

Table 3. Example of a Company Established HACCP Verification Schedule

Activity	Frequency	Responsibility	Reviewer
Verification Activities Scheduling	Yearly or Upon HACCP System Change	HACCP Coordinator	Plant Manager
Initial Validation of HACCP Plan	Prior to and During Initial Implementation of Plan	Independent Expert(s) ^a	HACCP Team
Subsequent validation of HACCP Plan	When Critical Limits Changed, Significant Changes in Process, Equipment Changed, After System Failure, etc.	Independent Expert(s) ^a	HACCP Team
Verification of CCP Monitoring as Described in the Plan (e.g., monitoring of patty cooking temperature)	According to HACCP Plan (e.g., once per shift)	According to HACCP Plan (e.g., Line Supervisor)	According to HACCP Plan (e.g., Quality Control)
Review of Monitoring, Corrective Action Records to Show Compliance with the Plan	Monthly	Quality Assurance	HACCP Team
Comprehensive HACCP System Verification	Yearly	Independent Expert(s) ^a	Plant Manager

^a Done by others than the team writing and implementing the plan. May require additional technical expertise as well as laboratory and plant test studies.

external to the food operation. This should include a technical evaluation of the hazard analysis and each element of the HACCP plan as well as on-site review of all flow diagrams and appropriate records from operation of the plan. A comprehensive verification is independent of other verification procedures and must be performed to ensure that the HACCP plan is resulting in the control of the hazards. If the results of the comprehensive verification identifies deficiencies, the HACCP team modifies the HACCP plan as necessary.

Verification activities are carried out by individuals within a company, third party experts, and regulatory agencies. It is important that individuals doing verification have appropriate technical expertise to perform this function. The role of regulatory and industry in HACCP was further described by the NACMCF (3).

Examples of verification activities are included as Appendix G.

Establish record-keeping and documentation procedures (Principle 7). Generally, the records maintained for the HACCP system should include the following:

1. A summary of the hazard analysis, including the rationale for determining hazards and control measures
2. The HACCP plan
 - Listing of the HACCP team and assigned responsibilities
 - Description of the food, its distribution, intended use, and consumer
 - Verified flow diagram

HACCP Plan Summary Table that includes information for:

- Steps in the process that are CCPs
- The hazard(s) of concern
- Critical limits
- Monitoring*
- Corrective actions*
- Verification procedures and schedule*
- Record-keeping procedures*

*A brief summary of position responsible for performing the activity and the procedures and frequency should be provided.

Table 4 is an example of the format for a HACCP plan summary table:

Table 4. Example Format for a HACCP Plan Summary Table

CCP	Hazards	Critical limit(s)	Monitoring	Corrective Actions	Verification	Records

3. Support documentation such as validation records
 4. Records that are generated during the operation of the plan
- Examples of HACCP records are given in Appendix H.

Implementation and maintenance of the HACCP plan. The successful implementation of a HACCP plan is facilitated by commitment from top management. The next

step is to establish a plan that describes the individuals responsible for developing, implementing, and maintaining the HACCP system. Initially, the HACCP coordinator and team are selected and trained as necessary. The team is then responsible for developing the initial plan and coordinating its implementation. Product teams can be appointed to develop HACCP plans for specific products. An important aspect in developing these teams is to assure that they have appropriate training. The workers who will be responsible for monitoring need to be adequately trained. On completion of the HACCP plan, operator procedures, forms, and procedures for monitoring and corrective action are developed. Often it is a good idea to develop a timeline for the activities involved in the initial implementation of the HACCP plan. Implementation of the HACCP system involves the continual application of the monitoring, record-keeping, corrective action procedures, and other activities as described in the HACCP plan.

Maintaining an effective HACCP system depends largely on regularly scheduled verification activities. The HACCP plan should be updated and revised as needed. An important aspect of maintaining the HACCP system is to assure that all individuals involved are properly trained so they understand their role and can effectively fulfill their responsibilities.

REFERENCES

1. National Academy of Sciences. 1985. An evaluation of the role of microbiological criteria for foods and food ingredients. National Academy Press, Washington, D.C.
2. National Advisory Committee on Microbiological Criteria for Foods. 1992. Hazard analysis and critical control point system. *Int. J. Food Microbiol.* 16:1-23.
3. National Advisory Committee on Microbiological Criteria for Foods. 1994. The role of regulatory agencies and industry in HACCP. *Int. J. Food Microbiol.* 21:187-195.
4. National Advisory Committee on Microbiological Criteria for Foods. 1997. The principles of risk assessment for illness caused by foodborne biological agents. Adopted April 4, 1997.

APPENDIX A: Examples of Common Prerequisite Programs

The production of safe food products requires that the HACCP system be built on a solid foundation of prerequisite programs. Each segment of the food industry must provide the conditions necessary to protect food while it is under their control. This has traditionally been accomplished through the application of cGMPs. These conditions and practices are now considered to be prerequisite to the development and implementation of effective HACCP plans. Prerequisite programs provide the basic environmental and operating conditions that are necessary for the production of safe, wholesome food. Common prerequisite programs may include but are not limited to:

Facilities. The establishment should be located, constructed, and maintained according to sanitary design principles. There should be linear product flow and traffic control to minimize cross-contamination from raw to cooked materials.

Supplier Control. Each facility should assure that its suppliers have in place effective GMP and food safety programs. These may be the subject of continuing supplier guarantee and supplier HACCP system verification.

Specifications. There should be written specifications for all ingredients, products, and packaging materials.

Production Equipment. All equipment should be constructed and installed according to sanitary design principles. Preventive maintenance and calibration schedules should be established and documented.

Cleaning and Sanitation. All procedures for cleaning and sanitation

of the equipment and the facility should be written and followed. A master sanitation schedule should be in place.

Personal Hygiene. All employees and other persons who enter the manufacturing plant should follow the requirements for personal hygiene.

Training. All employees should receive documented training in personal hygiene, GMP, cleaning and sanitation procedures, personal safety, and their role in the HACCP program.

Chemical Control. Documented procedures must be in place to ensure the segregation and proper use of nonfood chemicals in the plant. These include cleaning chemicals, fumigants, and pesticides or baits used in or around the plant.

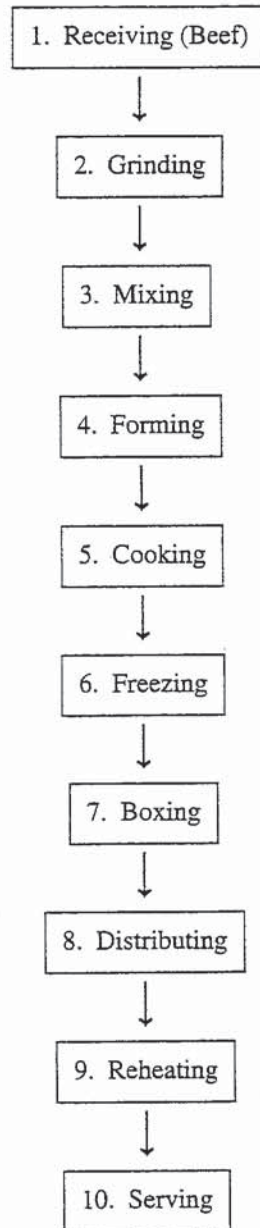
Receiving, Storage, and Shipping. All raw materials and products should be stored under sanitary conditions and the proper environmental conditions such as temperature and humidity to assure their safety and wholesomeness.

Traceability and Recall. All raw materials and products should be lot-coded and a recall system should be in place so that rapid and complete traces and recalls can be done when a product retrieval is necessary.

Pest Control. Effective pest control programs should be in place.

Other examples of prerequisite programs might include quality assurance procedures; standard operating procedures for sanitation, processes, product formulations, and recipes; glass control; procedures for receiving, storage, and shipping; labeling; and employee food and ingredient handling practices.

APPENDIX B: Example of a Flow Diagram for the Production of Frozen Cooked Beef Patties



APPENDIX C: Examples of Questions to be Considered When Conducting a Hazard Analysis

The hazard analysis consists of asking a series of questions that are appropriate to the process under consideration. The purpose of the questions is to assist in identifying potential hazards.

A. Ingredients

1. Does the food contain any sensitive ingredients that may present microbiological hazards (e.g., *Salmonella*, *Staphylococcus aureus*); chemical hazards (e.g., aflatoxin, antibiotic or pesticide residues); or physical hazards (stones, glass, metal)?
2. Are potable water, ice, and steam used in formulating or in handling the food?
3. What are the sources (e.g., geographical region, specific supplier)?

B. Intrinsic factors—Physical characteristics and composition (e.g., pH, type of acidulants, fermentable carbohydrate, water activity, preservatives) of the food during and after processing

1. What hazards may result if the food composition is not controlled?
2. Does the food permit survival or multiplication of pathogens and/or toxin formation in the food during processing?
3. Will the food permit survival or multiplication of pathogens and/or toxin formation during subsequent steps in the food chain?
4. Are there other similar products in the marketplace? What has been the safety record for these products? What hazards have been associated with the products?

C. Procedures used for processing

1. Does the process include a controllable processing step that destroys pathogens? If so, which pathogens? Consider both vegetative cells and spores.
2. If the product is subject to recontamination between processing (e.g., cooking, pasteurizing) and packaging, which biological, chemical, or physical hazards are likely to occur?

D. Microbial content of the food

1. What is the normal microbial content of the food?
2. Does the microbial population change during the normal time the food is stored before consumption?
3. Does the subsequent change in microbial population alter the safety of the food?
4. Do the answers to the above questions indicate a high likelihood of certain biological hazards?

E. Facility design

1. Does the layout of the facility provide an adequate separation of raw materials from ready-to-eat (RTE) foods if this is important to food safety? If not, what hazards should be considered as possible contaminants of the RTE products?
2. Is positive air pressure maintained in product packaging areas? Is this essential for product safety?
3. Is the traffic pattern for people and moving equipment a significant source of contamination?

F. Equipment design and use

1. Will the equipment provide the time-temperature control that is necessary for safe food?
2. Is the equipment properly sized for the volume of food that will be processed?
3. Can the equipment be sufficiently controlled so that the variation in performance will be within the tolerances required to produce a safe food?

4. Is the equipment reliable or is it prone to frequent breakdowns?
5. Is the equipment designed so that it can be easily cleaned and sanitized?
6. Is there a chance for product contamination with hazardous substances, e.g., glass?
7. What product safety devices are used to enhance consumer safety?

- Metal detectors
- Magnets
- Sifters
- Filters
- Screens
- Thermometers
- Bone removal devices
- Dud detectors

8. To what degree will normal equipment wear affect the likely occurrence of a physical hazard (e.g., metal) in the product?
9. Are allergen protocols needed in using equipment for different products?

G. Packaging

1. Does the method of packaging affect the multiplication of microbial pathogens and/or the formation of toxins?
2. Is the package clearly labeled "Keep Refrigerated" if this is required for safety?
3. Does the package include instructions for the safe handling and preparation of the food by the end user?
4. Is the packaging material resistant to damage, thereby preventing the entrance of microbial contamination?
5. Are tamper-evident packaging features used?
6. Is each package and case legibly and accurately coded?
7. Does each package contain the proper label?
8. Are potential allergens in the ingredients included in the list of ingredients on the label?

H. Sanitation

1. Can sanitation have an impact on the safety of the food that is being processed?
2. Can the facility and equipment be easily cleaned and sanitized to permit the safe handling of food?
3. Is it possible to provide sanitary conditions consistently and adequately to assure safe foods?

I. Employee health, hygiene, and education

1. Can employee health or personal hygiene practices impact on the safety of the food being processed?
2. Do the employees understand the process and the factors they must control to assure the preparation of safe foods?
3. Will the employees inform management of a problem that could impact on safety of food?

J. Conditions of storage between packaging and the end user

1. What is the likelihood that the food will be improperly stored at the wrong temperature?
2. Would an error in improper storage lead to a microbiologically unsafe food?

K. Intended use

1. Will the food be heated by the consumer?
2. Will there likely be leftovers?

L. Intended consumer

1. Is the food intended for the general public?
2. Is the food intended for consumption by a population with

increased susceptibility to illness (e.g., infants, the aged, the infirmed, immunocompromised individuals)?

3. Is the food to be used for institutional feeding or the home?

Appendix D: Examples of How the Stages of Hazard Analysis Are Used to Identify and Evaluate Hazards*

Hazard Analysis Stage	Frozen cooked beef patties produced in a manufacturing plant	Product containing eggs prepared for foodservice	Commercial frozen precooked, boned chicken for further processing
<p>Stage 1 Hazard Identification</p> <p><i>Determine potential hazards associated with product</i></p>	<p>Enteric pathogens (i.e., <i>Escherichia coli</i> O157:H7 and <i>Salmonella</i>)</p>	<p><i>Salmonella</i> in finished product.</p>	<p><i>Staphylococcus aureus</i> in finished product.</p>
<p>Stage 2 Hazard Evaluation</p> <p><i>Assess severity of health consequences if potential hazard is not properly controlled.</i></p> <p><i>Determine likelihood of occurrence of potential hazard if not properly controlled.</i></p> <p><i>Using information above, determine whether this potential hazard is to be addressed in the HACCP plan.</i></p>	<p>Epidemiological evidence indicates that these pathogens cause severe health effects, including death, among children and elderly. Undercooked beef patties have been linked to disease from these pathogens.</p>	<p>Salmonellosis is a food-borne infection causing a moderate to severe illness that can be caused by ingestion of only a few cells of <i>Salmonella</i>.</p>	<p>Certain strains of <i>S. aureus</i> produce an enterotoxin which can cause a moderate food-borne illness.</p>
	<p><i>E. coli</i> O157:H7 is of very low probability, and salmonellae are of moderate probability in raw meat.</p>	<p>Product is made with liquid eggs which have been associated with past outbreaks of salmonellosis. Recent problems with <i>Salmonella</i> serotype Enteritidis in eggs cause increased concern. Probability of <i>Salmonella</i> in raw eggs cannot be ruled out.</p> <p>If not effectively controlled, some consumers are likely to be exposed to <i>Salmonella</i> from this food.</p>	<p>Product may be contaminated with <i>S. aureus</i> due to human handling during boning of cooked chicken. Enterotoxin capable of causing illness will only occur as <i>S. aureus</i> multiplies to about 1,000,000/g. Operating procedures during boning and subsequent freezing prevent growth of <i>S. aureus</i>, thus the potential for enterotoxin formation is very low.</p>
	<p>The HACCP team decides that enteric pathogens are hazards for this product.</p> <p>Hazards must be addressed in the plan.</p>	<p>HACCP team determines that if the potential hazard is not properly controlled, consumption of product is likely to result in an unacceptable health risk.</p> <p>Hazard must be addressed in the plan.</p>	<p>The HACCP team determines that the potential for enterotoxin formation is very low. However, it is still desirable to keep the initial number of <i>S. aureus</i> organisms low. Employee practices that minimize contamination, rapid carbon dioxide freezing and handling instructions have been adequate to control this potential hazard.</p> <p>Potential hazard does not need to be addressed in the plan.</p>

* For illustrative purposes only. The potential hazards identified may not be the only hazards associated with the products listed. The responses may be different for different establishments.

Appendix E: Example I of a CCP Decision Tree

Important considerations when using the decision tree:

The decision tree is used after the hazard analysis.

The decision tree then is used at the steps where a hazard that must be addressed in the HACCP plan has been identified.

A subsequent step in the process may be more effective for controlling a hazard and may be the preferred CCP.

More than one step in a process may be involved in controlling a hazard.

More than one hazard may be controlled by a specific control measure.

Q1. Does this step involve a hazard of sufficient likelihood of occurrence and severity to warrant its control?

↓ YES ↓ NO → Not a CCP

Q2. Does a control measure for the hazard exist at this step?

↓ YES

↓ NO

Is control at this step necessary for safety?

↓ YES → Not a CCP

↓ NO → Modify the step, process, or product

↑

Modify the step, process, or product

↑

YES

↓

Not a CCP → STOP*

Q3. Is control at this step necessary to prevent, eliminate, or reduce the risk of the hazard to consumers?

↓ YES → CCP

↓ NO → Not a CCP → STOP*

* Proceed to next step in the process.

Appendix F: Example II of a CCP Decision Tree

Q1. Do control measure(s) exist for the identified hazard?

↓ YES

↓ NO

Is control at this step necessary for safety? → YES

↓ NO → Not a CCP → STOP*

↑

Modify step, process, or product.

↑

YES

Q2. Does this step eliminate or reduce the likely occurrence of a hazard to an acceptable level?

↓ NO

↓ YES

Q3. Could contamination with the identified hazard(s) occur in excess of acceptable level(s) or could it increase to an unacceptable level(s)?

↓ YES

↓ NO → Not a CCP → STOP*

Q4. Will a subsequent step eliminate the identified hazard(s) or reduce its likely occurrence to an acceptable level?

↓ YES → Not a CCP → STOP*

↓ NO

↓ CRITICAL CONTROL POINT

* Proceed to next step in the described process.

Appendix G: Examples of Verification Activities

- A. Verification procedures may include:
 - 1. Establishment of appropriate verification schedules
 - 2. Review of the HACCP plan for completeness
 - 3. Confirmation of the accuracy of the flow diagram
 - 4. Review of the HACCP system to determine whether the facility is operating according to the HACCP plan
 - 5. Review of CCP monitoring records
 - 6. Review of records for deviations and corrective actions
 - 7. Validation of critical limits to confirm that they are adequate to control significant hazards
 - 8. Validation of HACCP plan, including on-site review
 - 9. Review of modifications of the HACCP plan
 - 10. Sampling and testing to verify CCPs
- B. Verification should be conducted:
 - 1. Routinely, or on an unannounced basis, to ensure that CCPs are under control
 - 2. When there are emerging concerns about the safety of the product
 - 3. When foods have been implicated as a vehicle of food-borne disease
 - 4. To confirm that changes have been implemented correctly after a HACCP plan has been modified
- 6. To assess whether a HACCP plan should be modified because of a change in the process, equipment, ingredients, etc.
- C. Verification reports may include information on the presence and adequacy of:
 - 1. The HACCP plan and the person(s) responsible for administering and updating the HACCP plan
 - 2. The records associated with CCP monitoring
 - 3. Direct recording of monitoring data of the CCP while in operation
 - 4. Certification that monitoring equipment is properly calibrated and in working order
 - 5. Corrective actions for deviations
 - 6. Sampling and testing methods used to verify that CCPs are under control
 - 7. Modifications to the HACCP plan
 - 8. Training and knowledge of individuals responsible for monitoring CCPs
 - 9. Validation activities

Appendix H: Examples of HACCP Records

- A. Ingredients for which critical limits have been established
 - 1. Supplier certification records documenting compliance of an ingredient with a critical limit
 - 2. Processor audit records verifying supplier compliance
 - 3. Storage records (e.g., time, temperature) for when ingredient storage is a CCP
- B. Processing, storage and distribution records
 - 1. Information that establishes the efficacy of a CCP to maintain product safety
 - 2. Data establishing the safe shelf life of the product; whether age of product can affect safety
- 3. Records indicating compliance with critical limits when packaging materials, labeling, or sealing specifications are necessary for food safety
- 4. Monitoring records
- 5. Verification records
- C. Deviation and corrective action records
- D. Employee training records that are pertinent to CCPs and the HACCP plan
- E. Documentation of the adequacy of the HACCP plan from a knowledgeable HACCP expert.